

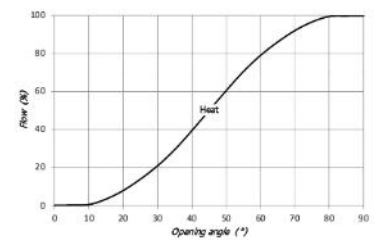
LK 841 ThermoMix

TECHNICAL DATA

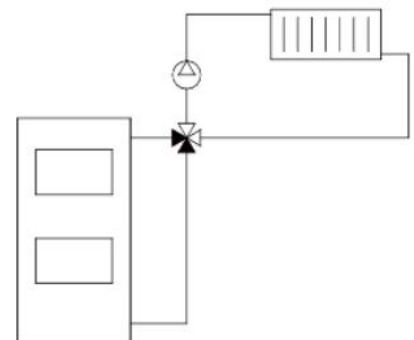
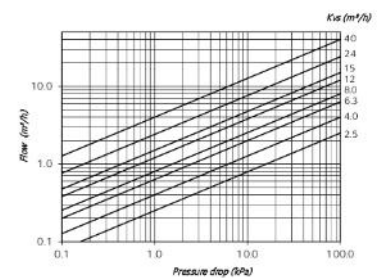
Working temperature	Min. +5°C/Max. +110°C (+120°C briefly)
Ambient temperature	Min. +5°C/Max. +60°C
Max. working pressure	1.0 MPa (10 bar)
Max. pressure difference	50 kPa
Leakage	< 1.5% of Kvs at 50 kPa
Angle of rotation	90°
Torque	< 1 Nm
Media	Water - Glycol/Ethanol mixture max. 50%
Thread standard Female/Male	Rp / G
Material, valve body/slide/spindle	Brass EN 12165 CW617N
Material, internal cover	PPS Composite
Material, external cover	Aluminium
Material, O-rings	EPDM
Spindle sealing	Two O-rings



Valve Characteristics



Capacity Diagram

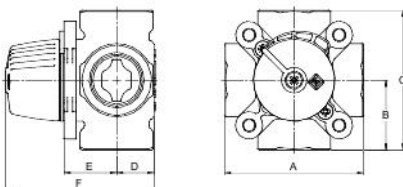


LK 841 ThermoMix is a 4-way mixing valve suited for heating systems in which a high return temperature to the boiler is needed to avoid corrosion, thus prolonging the life-time of the heat source.

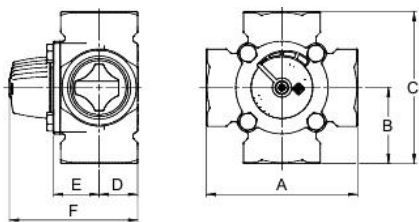
LK 841 ThermoMix is suitable for motorization.

The valve can be mounted at any angle. LK 841 ThermoMix can easily be adapted for right- or left-hand mounting.

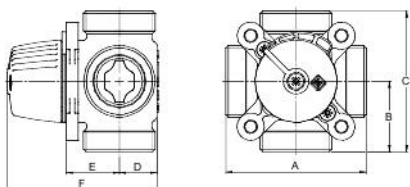
LK 841 - FEMALE THREAD



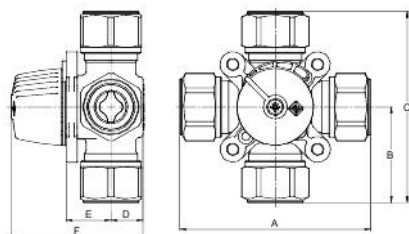
Rp 1½" / Rp 2"



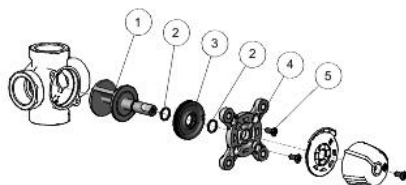
LK 841 - MALE THREAD



LK 841 - COMPRESSION FITTING



SPARE PARTS AND ACCESSORIES



Article number	Kvs m³/h	Dim.	A mm	B mm	C mm	D mm	E mm	F mm	Weight kg
180862	2.5	F ½"	80	40	80	20	28	82	0.7
180863	4.0	F ¾"	80	40	80	20	28	82	0.7
180864	6.3	F ¾"	80	40	80	20	28	82	0.7
180865	8.0	F 1"	82	41	82	22	31	87	0.8
180866	12	F 1"	82	41	82	22	31	87	0.8
180867	15	F 1¼"	84	42	84	25	32	91	0.9
181198	24	F 1½"	118	59	118	30	36	100	2.3
181199	40	F 2"	127	63.5	127	35	40	109	2.7

Article number	Kvs m ³ /h	Dim.	A mm	B mm	C mm	D mm	E mm	F mm	Weight kg
180868	2.5	M ¾"	80	40	80	20	28	82	0.7
180869	4.0	M 1"	80	40	80	20	28	82	0.7
180870	6.3	M 1"	80	40	80	20	28	82	0.7
180871	8.0	M 1¼"	82	41	82	22	31	87	0.8
180872	12	M 1¼"	82	41	82	22	31	87	0.8
180873	15	M 1½"	84	42	84	24	32	90	0.9

Article number	Kvs m ³ /h	Dim.	A mm	B mm	C mm	D mm	E mm	F mm	Weight kg
180874	2.5	15 mm	114	57	114	20	28	82	1.0
180875	2.5	18 mm	114	57	114	20	28	82	1.2
180876	2.5	22 mm	114	57	114	20	28	82	1.0
180877	4.0	28 mm	120	60	120	20	28	82	1.0
180878	6.3	28 mm	120	60	120	20	28	82	1.0

Spare parts and Accessories

Article number	Article	Included components
187066	Sealing kit 840/841, DN 15-20	2, 3 and 5
187067	Sealing kit 840/841/842, DN 25-32	2, 3 and 5
187078	Sealing kit 840/841, DN 40-50	2, 3 and 5
187069	Repair kit 841, DN 15-20	1-5
187071	Repair kit 841/842, DN 25-32	1-5
187080	Repair kit 841, DN 40-50	1-5