

# **Automatic Feeder Unit For the Multi-Heat stoker boiler**



## **Features**

- **It can be used for both wood pellets and corn.**
- **It takes the guess work out of filling.**
- **Creates an airtight seal which prevents burn-back.**
- **Power feed to auger motor.**
- **Closes automatically in power failure.**
- **Includes new hopper cover.**
- **It can be easily removed.**

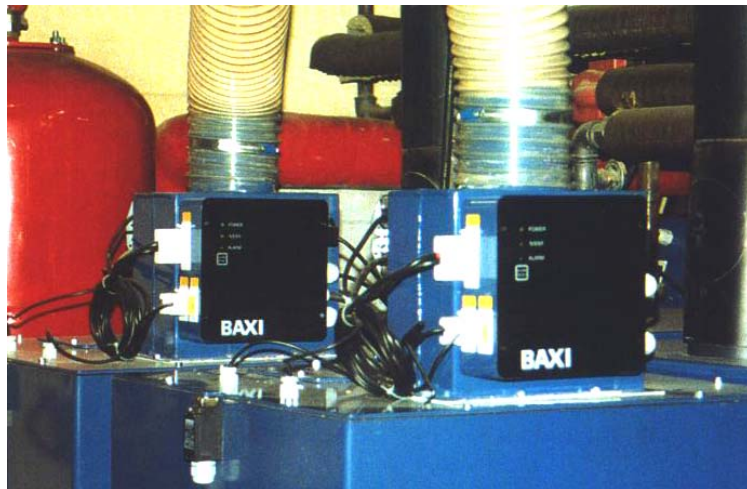
**Simple, Safe, Functional.**

# Automatic Feeder Unit

## For the Multi-Heat stoker boiler

# Specifications

		Unit for Multi-Heat 1,5	Unit for Multi-Heat 2,5 and 4,0
A. Depth, total	mm	428	428
B. Width	mm	286	286
C. Height	mm	339	339
Magazine cover dimensions (length x width)	mm	472 x 472	590 x 590
D. Magazine width	mm	500 / 900	600 / 1000
Magazine size	litres	200 / 350	350 / 600
Height of neck from magazine base	mm	1320	1635
Neck to unit, exterior diameter (coupling from external store)	mm	120	120
Weight of unit including damper motor and control	Kg	35	35
Fuel: wood pellets ca. 8% water	mm	5-20 mm	5-20 mm
Fuel: grain ca. 15% water	-	-	-
Damper motor at opening	W	5	5
Damper motor in open position	W	1,5	1,5
Damper motor – rotation moment (motor and spring return)	Nm	15	15
Damper motor – electrical connection	V	24	24
Noise level	dB(A)	<62	<62
Capacitive sensor (N1 and N2) – electrical connection	V	24	24
<b>Multi-Heat stoker boiler</b>			
Geared motor, power	kW	0,12	0,37
Fan motor, power	W	90	90
Power consumption	kW	0,21	0,46
Electrical connection/fuse sizes	3 x 240 V+N+J-60 Hz/10 A	X	X



**Simple, Safe, Functional.**